



2020年7月1日 日本WHO協会「COVID-19とSDGs」
オンラインセミナー
『アジア太平洋地域におけるCOVID-19』

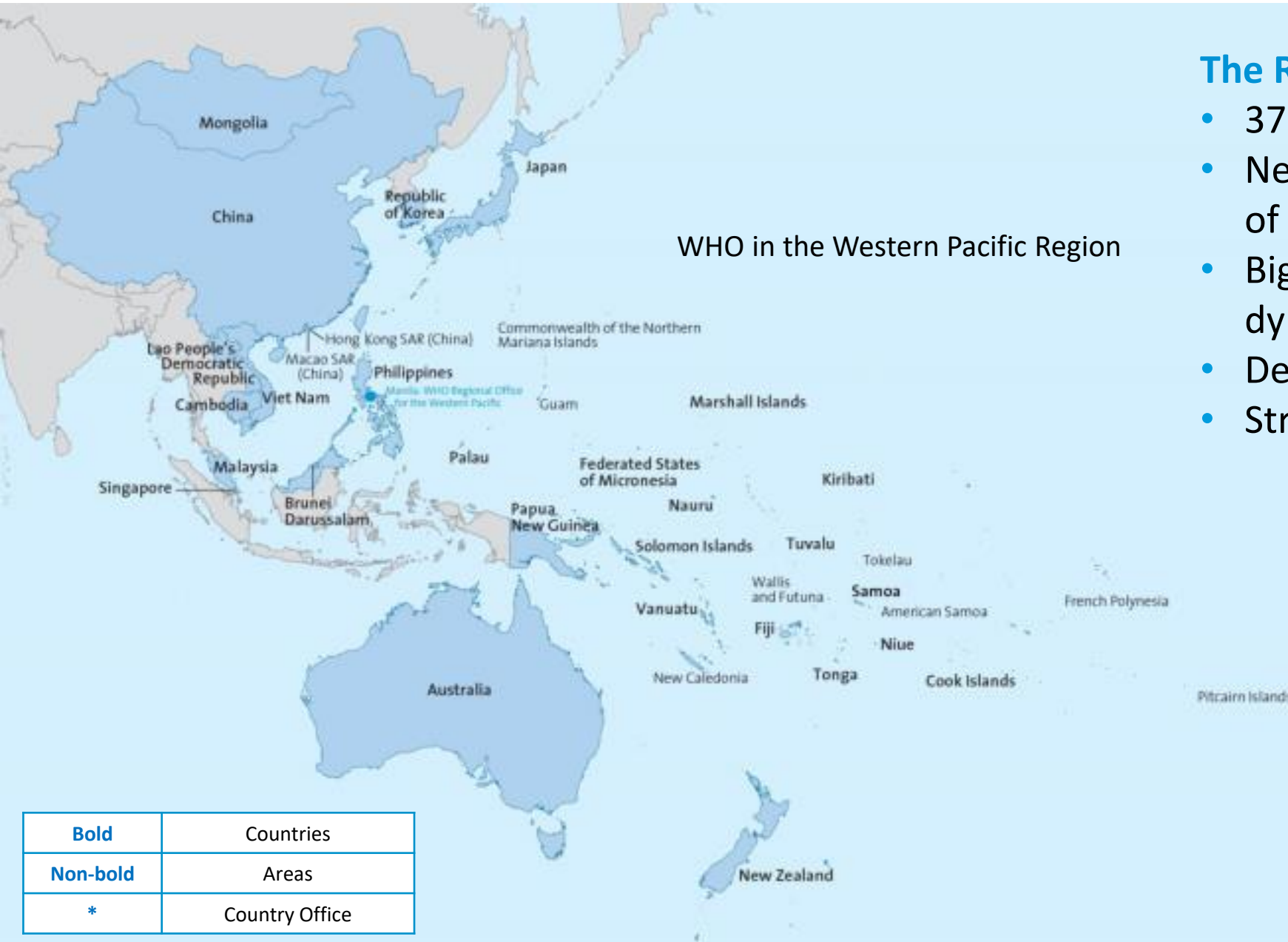
WHO西太平洋地域事務局
事業管理部加盟国支援課
テクニカルオフィサー
芝田おぐさ



1. WHO西太平洋地域事務局の紹介
2. COVID-19の概況
3. WHOの活動とWHO西太平洋地域各国の対応状況
4. COVID-19とSDGs

1. WHO西太平洋地域事務局の紹介
2. COVID-19の概況
3. WHOの活動とWHO西太平洋地域各国の対応状況
4. COVID-19とSDGs

WHO in the Western Pacific Region



WHO in the Western Pacific Region

The Region:

- 37 countries and areas
- Nearly 1.9bn people, more than 25% of the world's population
- Big and small countries; diverse and dynamic
- Developed & developing economies
- Stretches across 7 time zones

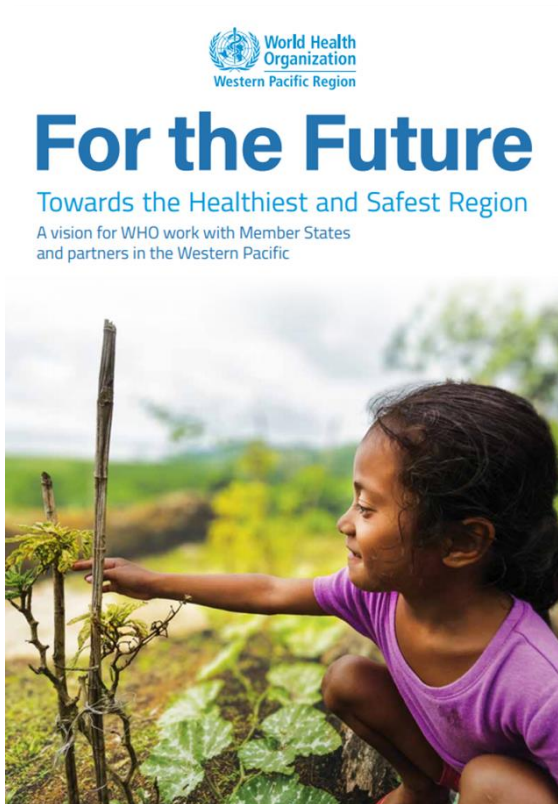
How we work:

- 1 of 6 WHO Regions
- Regional Office in Manila
- 15 WHO Country Offices
- More than 600 staff

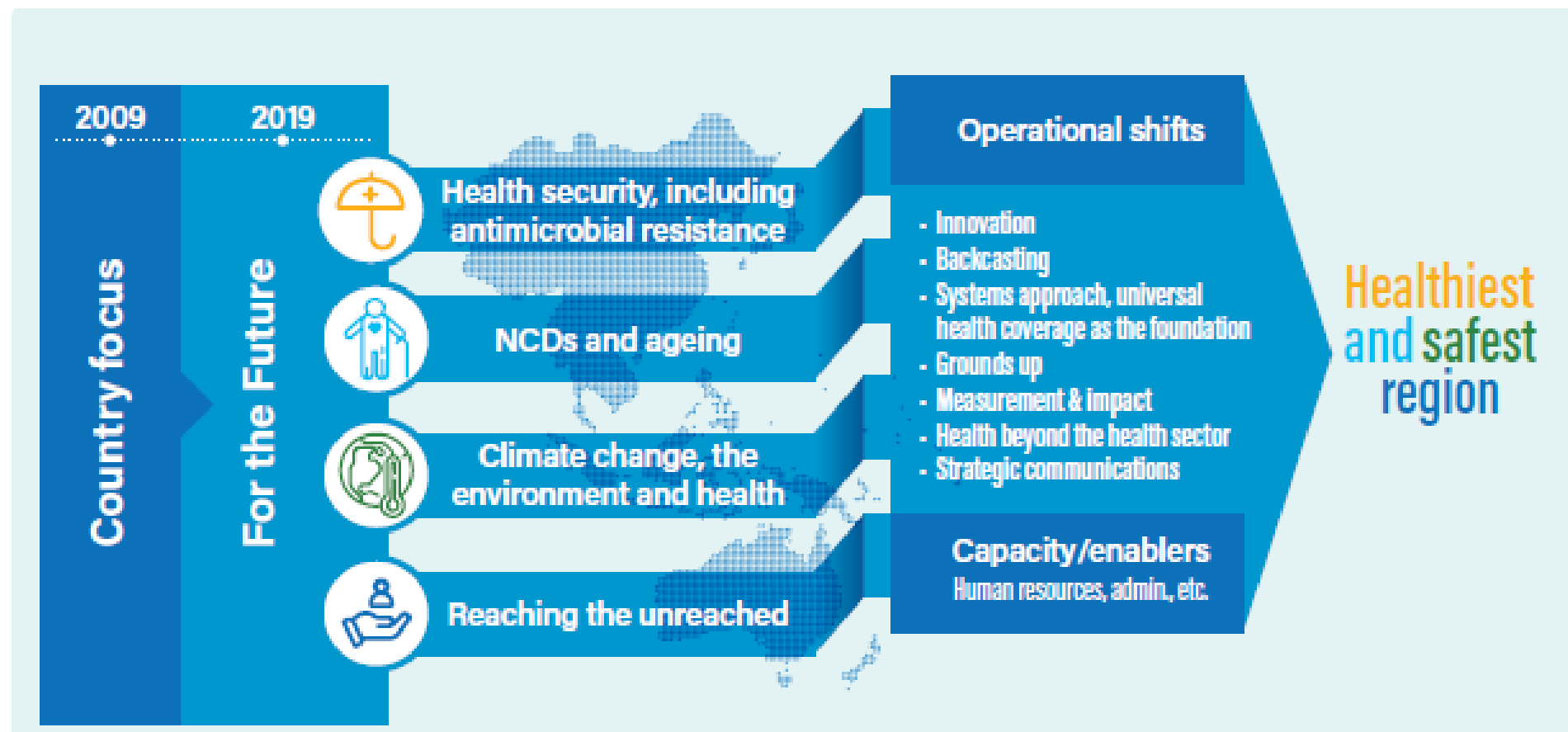
Bold	Countries
Non-bold	Areas
*	Country Office

The Thematic Priorities “For the Future”

“For the Future Towards the Healthiest and Safest Region” articulates a shared vision for WHO’s work with Member States and partners in the coming years.



January 2020



WPRO for the future

1. WHO西太平洋地域事務局の紹介
2. COVID-19の概況
3. WHOの活動とWHO西太平洋地域各国の対応状況
4. COVID-19とSDGs

Case Comparison of COVID-19 cases as of 24 June

WHO Region	Cases(↑ 24h)	Deaths(↑ 24h)	Proportion of Fatal cases(%)
Total	9,129,146 (135,212)	473,797 (4,187)	5.2
Total WPRO	209,112 (1,423)	7,371 (18)	3.5
Total of Other Regions	8,920,034 (133,789)	466,426 (4,169)	5.2
African Region	239,548 (7,333)	5,290 (173)	2.2
Region of the Americas	4,507,006 (68,785)	226,504 (2,274)	5.0
Eastern Mediterranean Region	950,730 (17,678)	21,439 (442)	2.3
European Region	2,581,602 (18,960)	194,530 (736)	7.5
South-East Asia Region	641,148 (21,033)	18,663 (544)	2.9

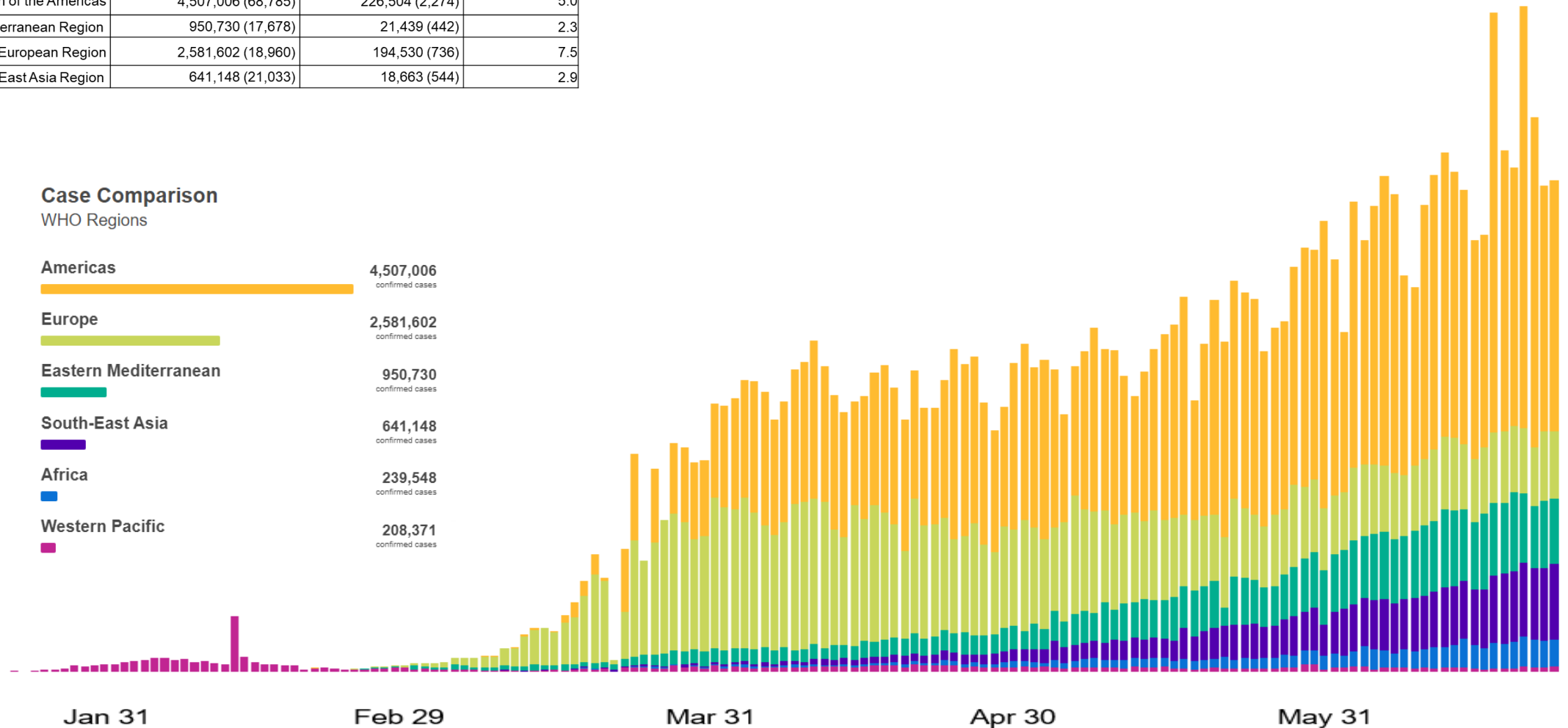
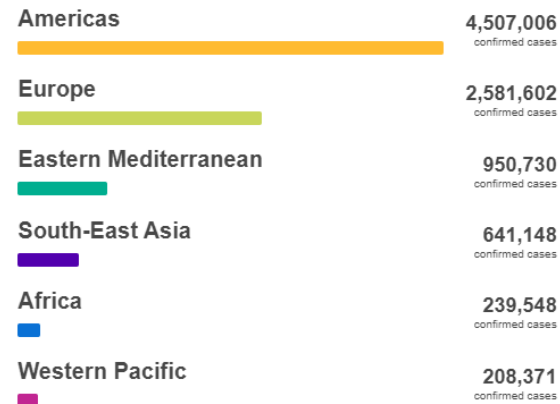
- 215 countries reporting cases

- Cumulative deaths:

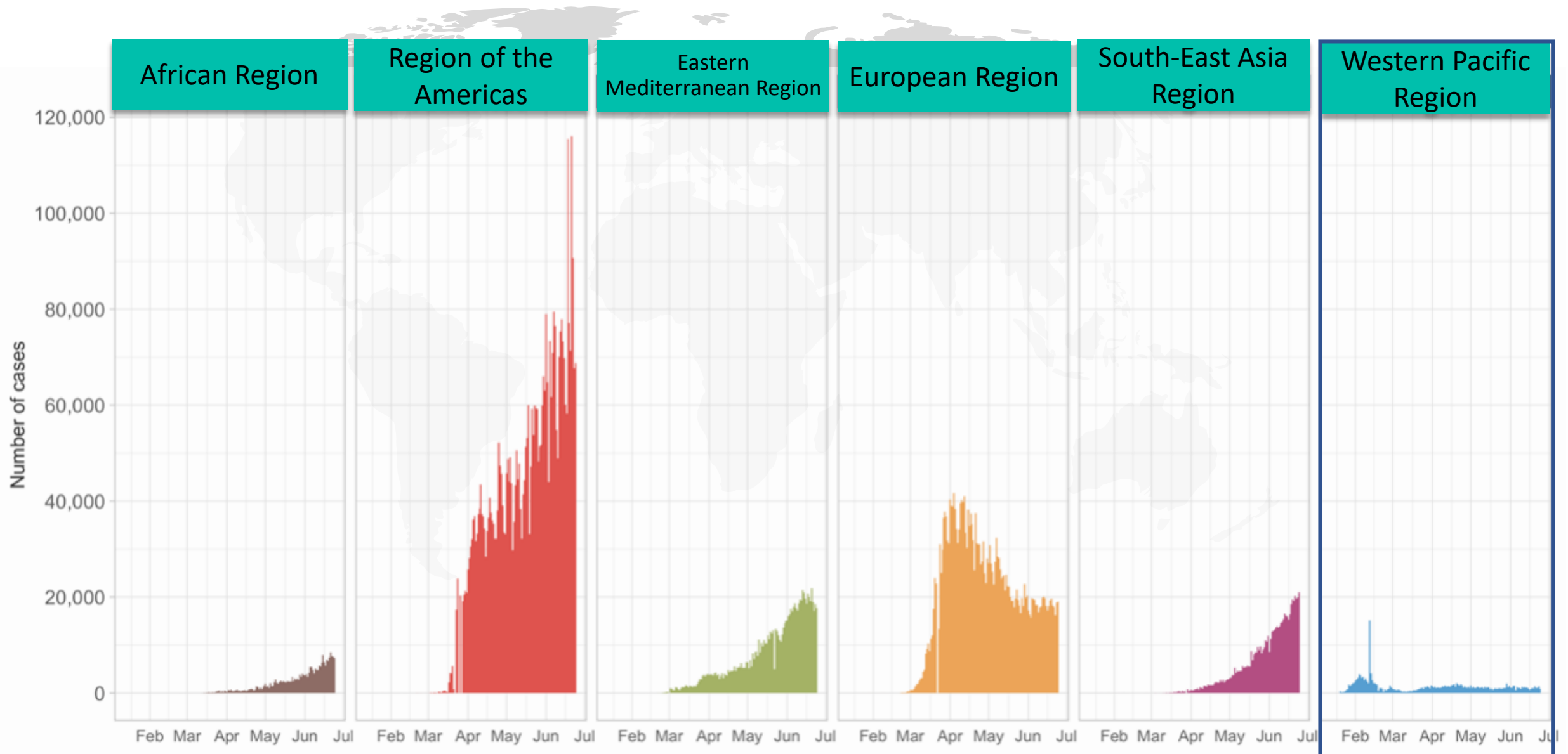
USA 120,171, Brazil 51,271, UK 42,927, Italy 34,675, France 29,648, Spain 28,325, Mexico 22,584, India 14,476, Iran 9,863, Belgium 9,713

Case Comparison

WHO Regions



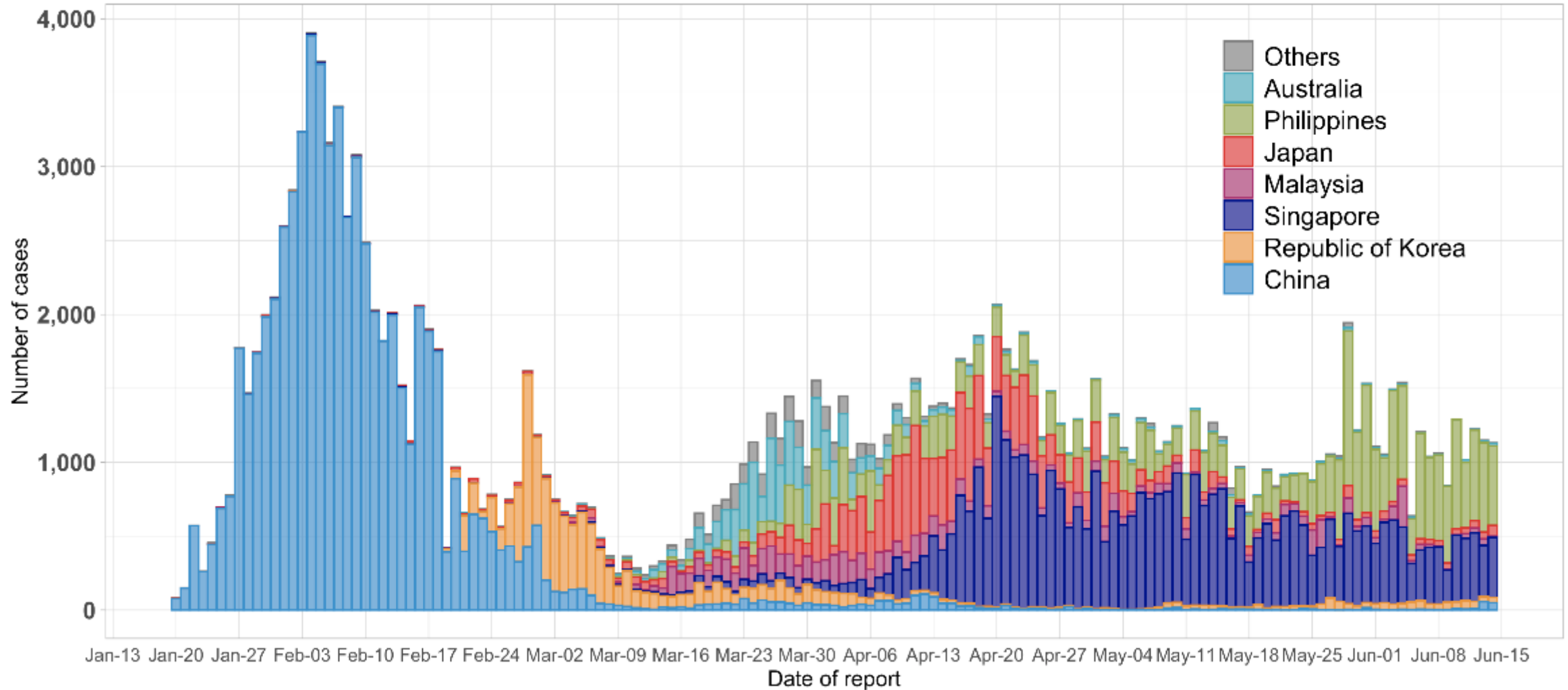
Epidemic Curve of Confirmed COVID-19 Cases by WHO Regions as of 25 June



Number of reported cases in WPR by date of report as of 15 June 2020

Epidemic curve of confirmed COVID-19 cases in Western Pacific Region

Excluding clinically-diagnosed cases in China



COVID-19 STAGES OF TRANSMISSION



Vulnerable Communities has been Impacted by COVID-19



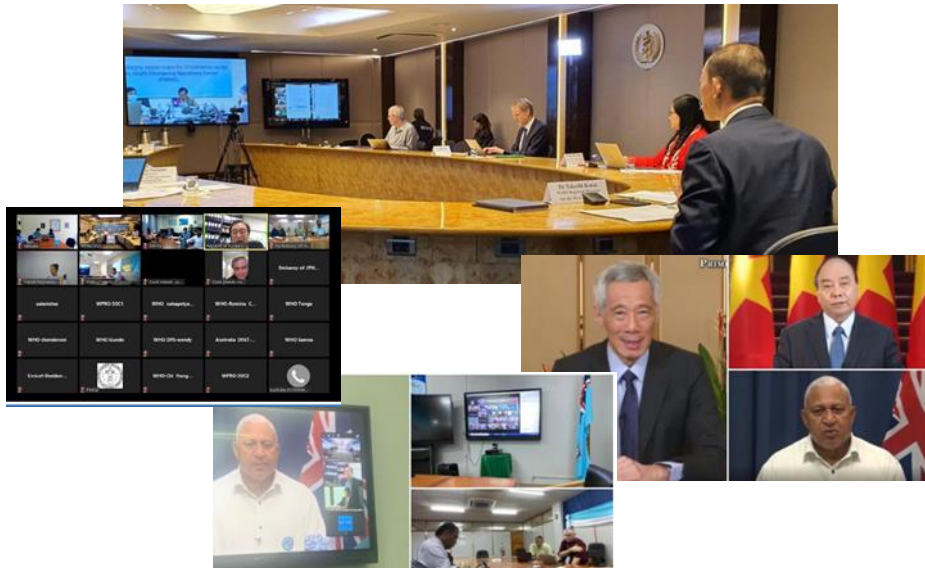
- ☐ Migrant Workers
- ☐ Overcrowded Housing & Slums
- ☐ Closed Facilities
- ☐ Residential Facilities
- ☐ Indigenous Communities
- and others

1. WHO西太平洋地域事務局の紹介
2. COVID-19の概況
3. WHOの活動とWHO西太平洋地域各国の対応状況
4. COVID-19とSDGs

What WPRO is Doing for COVID-19 Response

Connecting Countries

- Facilitate information sharing under IHR
- Strengthened the weekly coordination and experienced sharing videoconference with Member States/IHR focal points
- Virtual Meeting of Health Ministers in the WHO Western Pacific Region
- Research and Development of diagnosis, treatment and prevention in connecting research institutes



Articulating policies and setting standards

As of 25 June, 22 publications released



28 February 2020
Preparing for large-scale community transmission of COVID-19



17 March 2020
WHO Western Pacific Regional Action Plan for Response to Large-Scale Community Outbreaks of COVID-19



15 May 2020
Calibrating long-term non-pharmaceutical interventions for COVID-19: Principles and facilitation tools



19 May 2020
Actions for consideration in the care and protection of vulnerable population groups for COVID-19



To be published
Interim guidance on establishing an integrated and nationwide contact tracing system



To be published
Consideration to relax border restrictions in the Western Pacific Region

What WPRO is Doing for COVID-19 Response

Support Countries

- We provide support to countries to improve response, public health and health systems

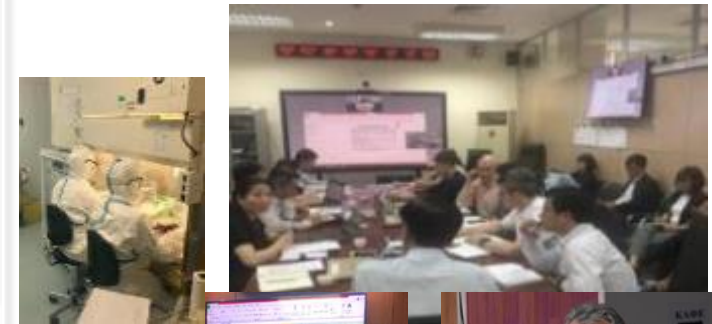
- Support the countries Whole-of-government and whole-of society approach



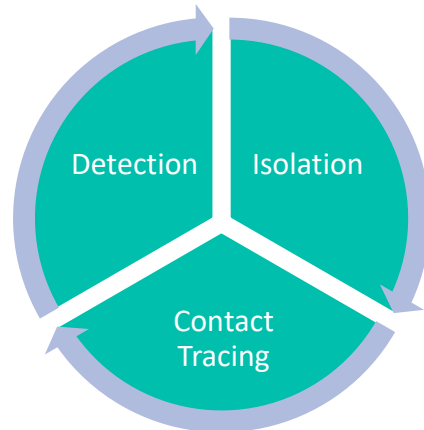
- Ensuring healthcare pathways



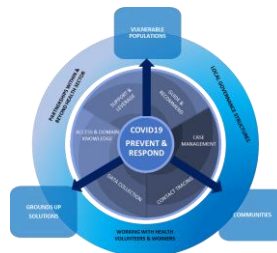
- Support multisource surveillance



- Support early detection, contact tracing, quarantine



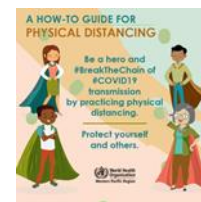
- Leveraging community engagement



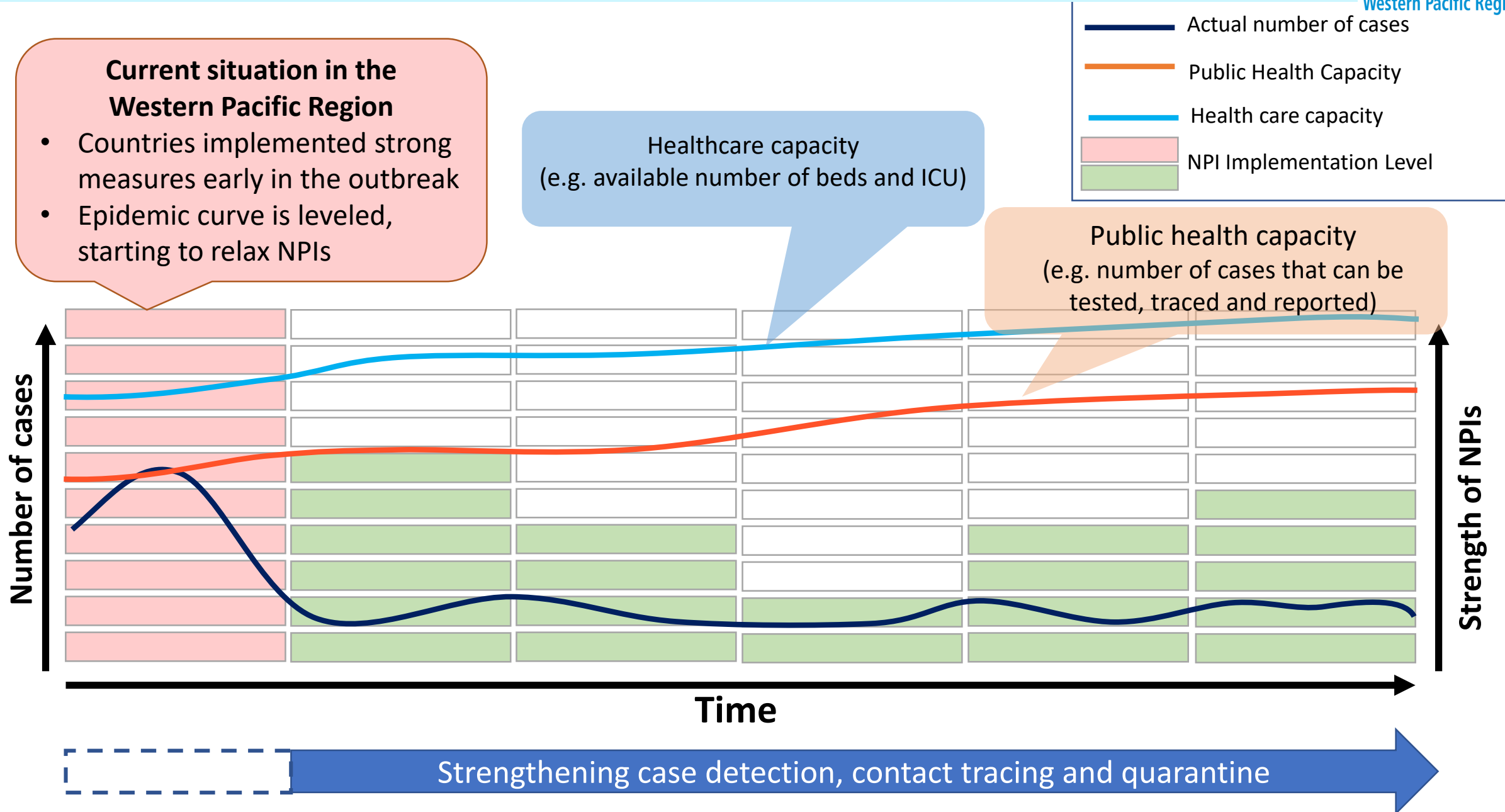
- Procurement



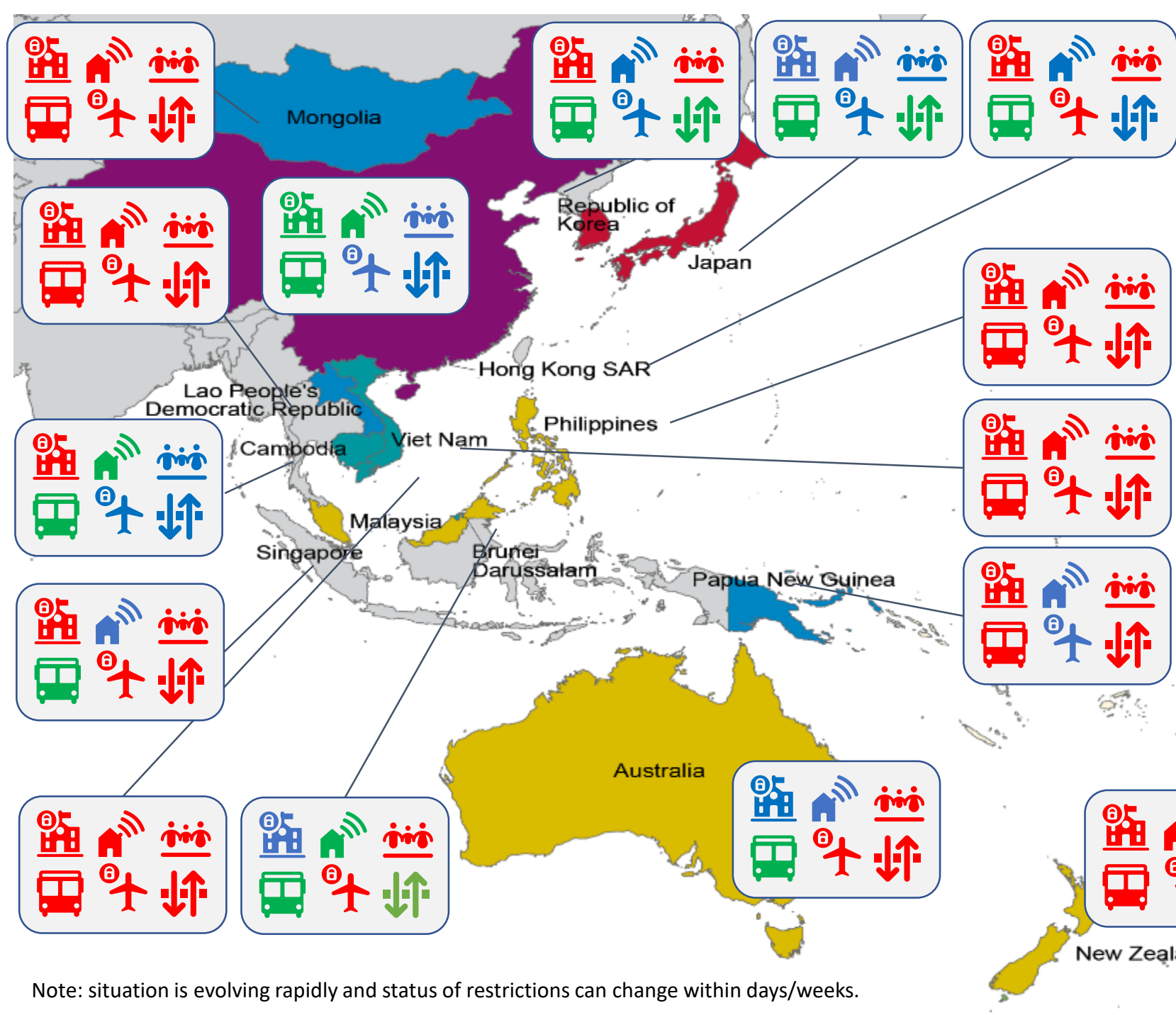
- Strategic communications



Non-Pharmaceutical interventions strategy: Proposed Approach



COVID-19 related restrictions in selected countries of WHO's Western Pacific Region (as of 19/4/2020)



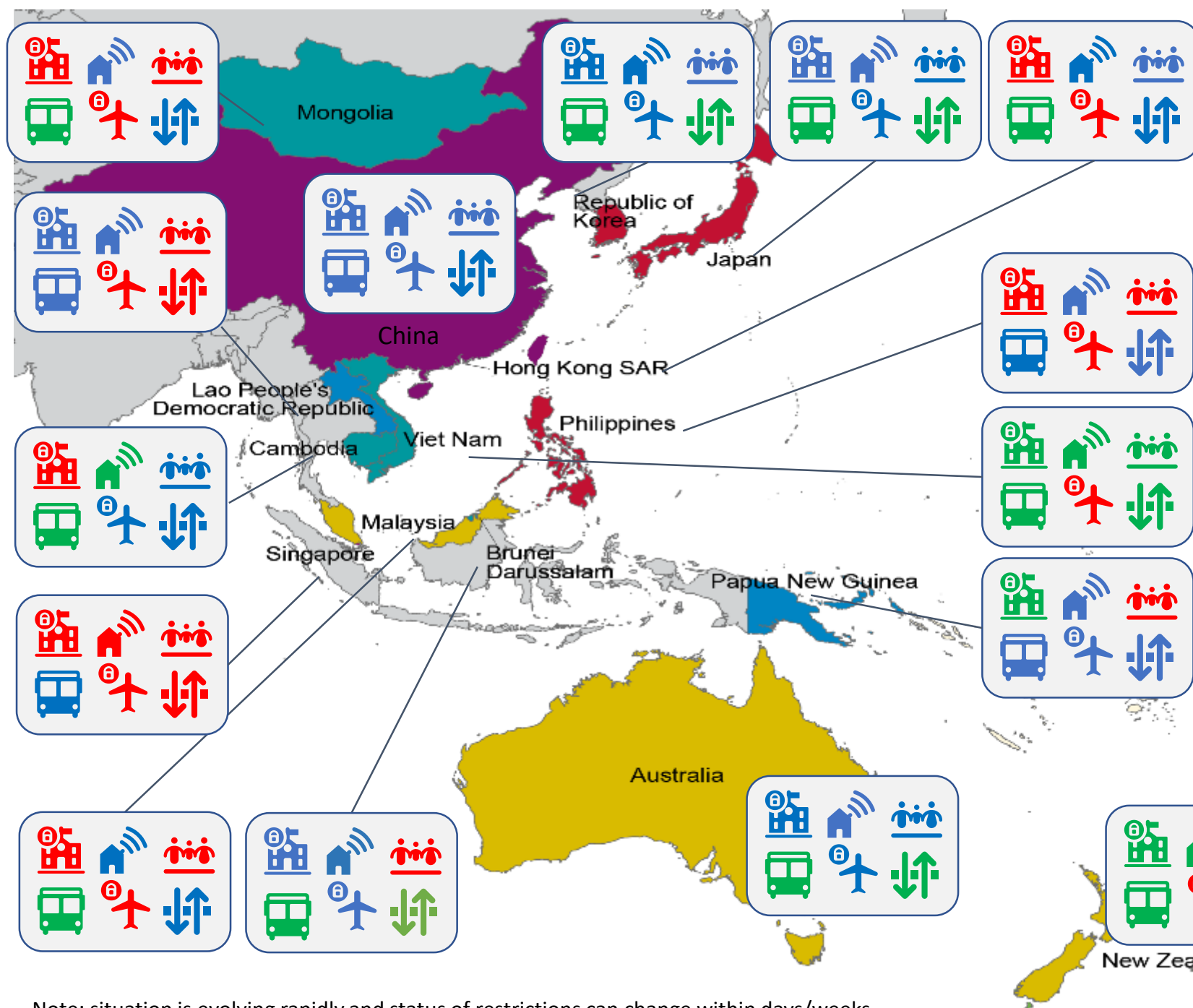
	School Closure
	Workplace closures
	Cancelling of Public Events
	Closing of Public Transportation
	Movement Restrictions
	Travel restrictions

	National measures
	Partial/Regional measures
	No restrictions

	0-100 cases
	101-1000 cases
	1001-10.000 cases
	10.001-20.000 cases
	Over 20.000 cases

Note: situation is evolving rapidly and status of restrictions can change within days/weeks.

COVID-19 related restrictions in selected countries of WHO's Western Pacific Region (as of 19/5/2020)



	School Closure
	Workplace closures
	Cancelling of Public Events
	Closing of Public Transportation
	Movement Restrictions
	Travel restrictions

	National measures
	Partial/Regional measures
	No restrictions

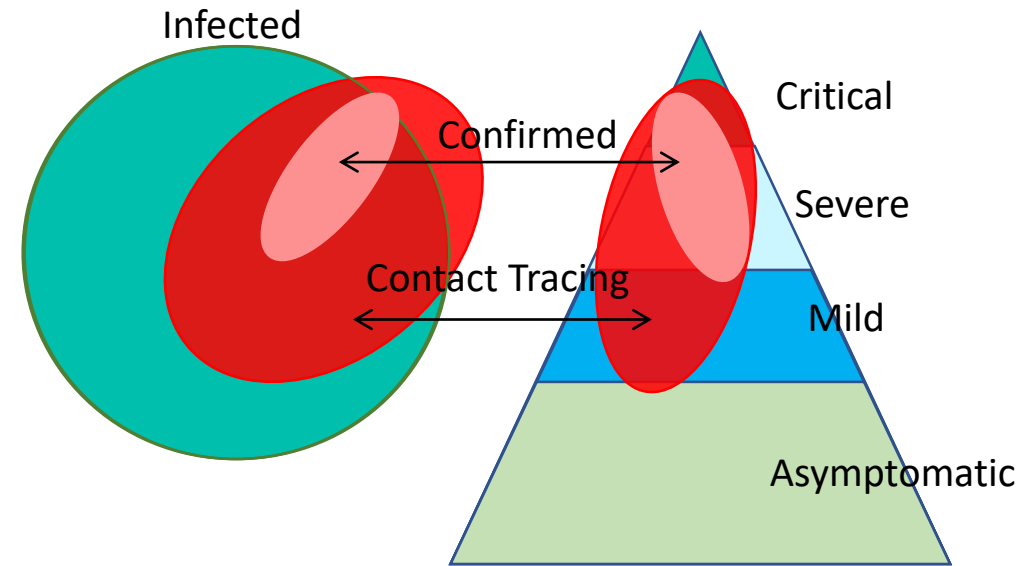
	0-100 cases
	101-1000 cases
	1001-10.000 cases
	10.001-20.000 cases
	Over 20.000 cases

Note: situation is evolving rapidly and status of restrictions can change within days/weeks.

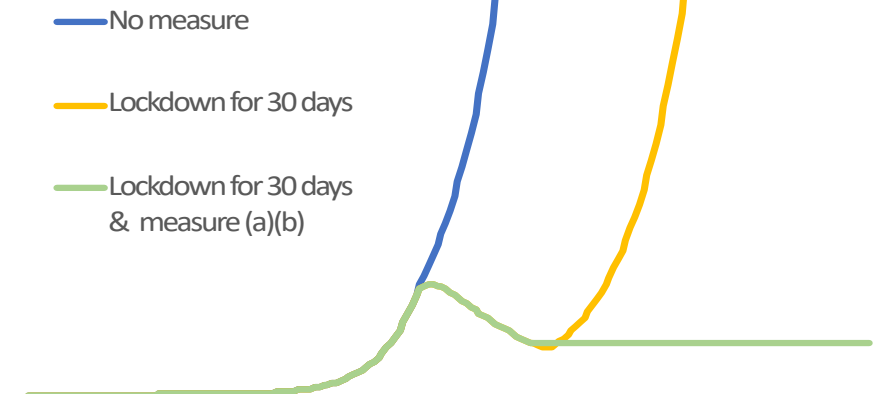
Common Aspects of COVID-19 Response in Western Pacific Countries

Common Aspects of COVID-19 Response in Western Pacific Countries

- ❑ Strong leadership for whole-of-government approach
- ❑ Aggressive public health measures
- ❑ Implemented strong NPI measures early in the outbreak
- ❑ Strategic communication which lead to leveraging community engagement



Conceptual figure of epidemic curve



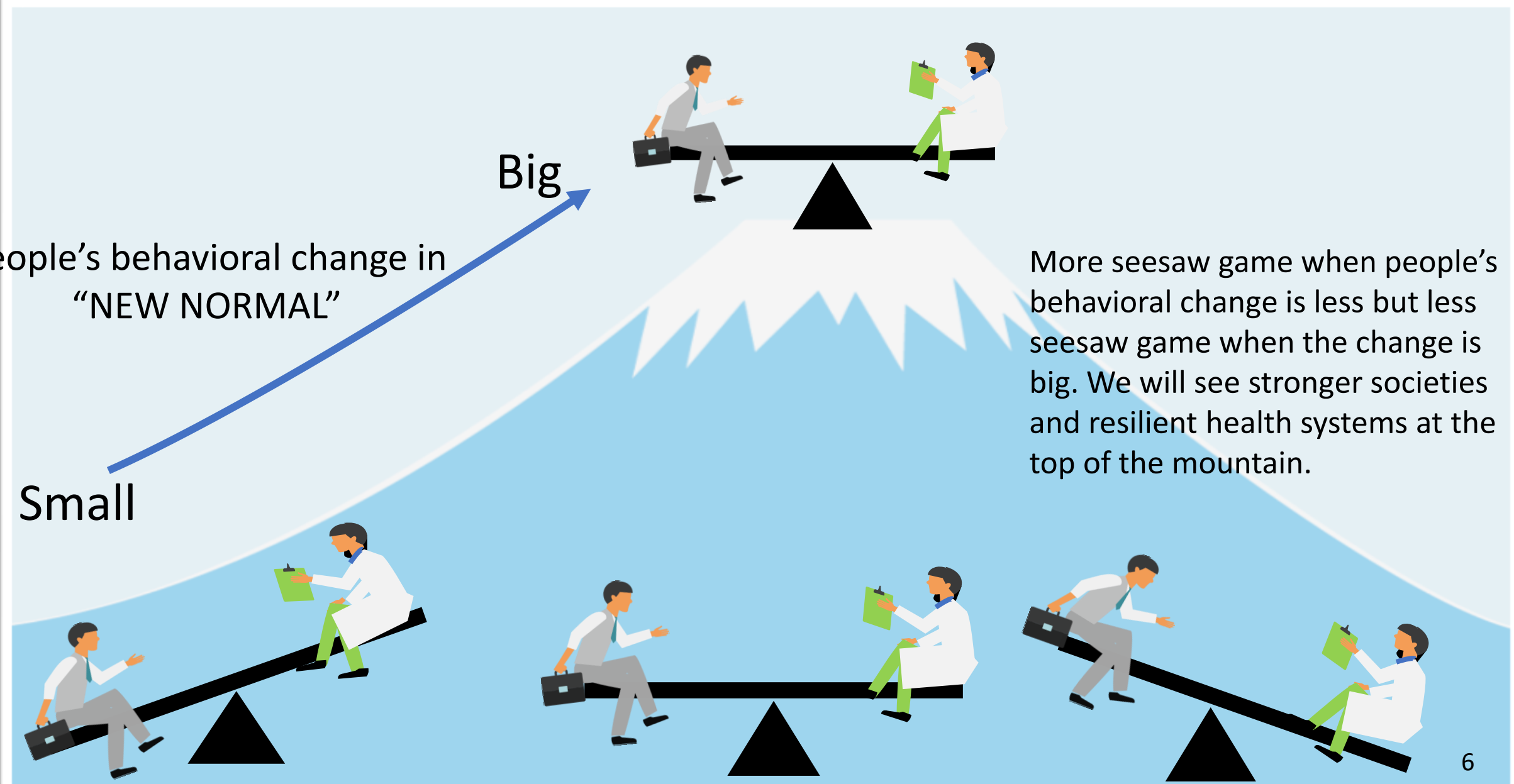
Sorano 2020 (unpublished data)

Efficacy of “New Normal” *a conceptual scheme*

People's behavioral change in
“NEW NORMAL”

Small

Big

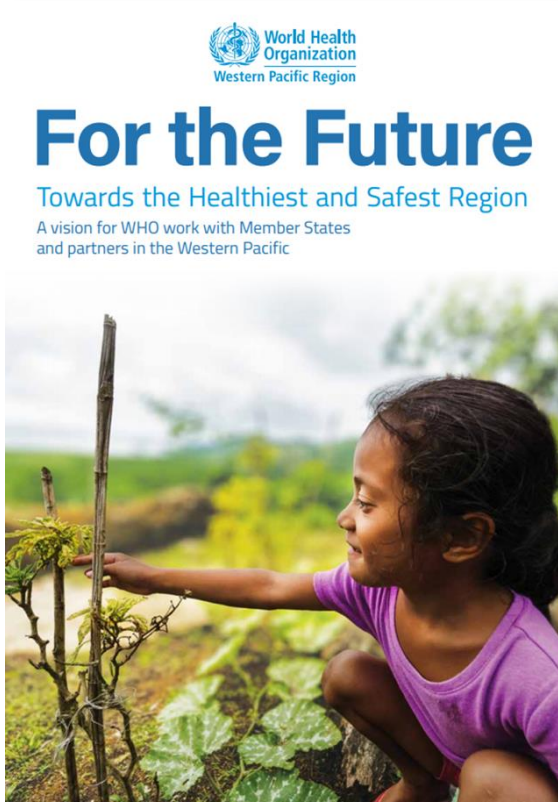


More seesaw game when people's behavioral change is less but less seesaw game when the change is big. We will see stronger societies and resilient health systems at the top of the mountain.

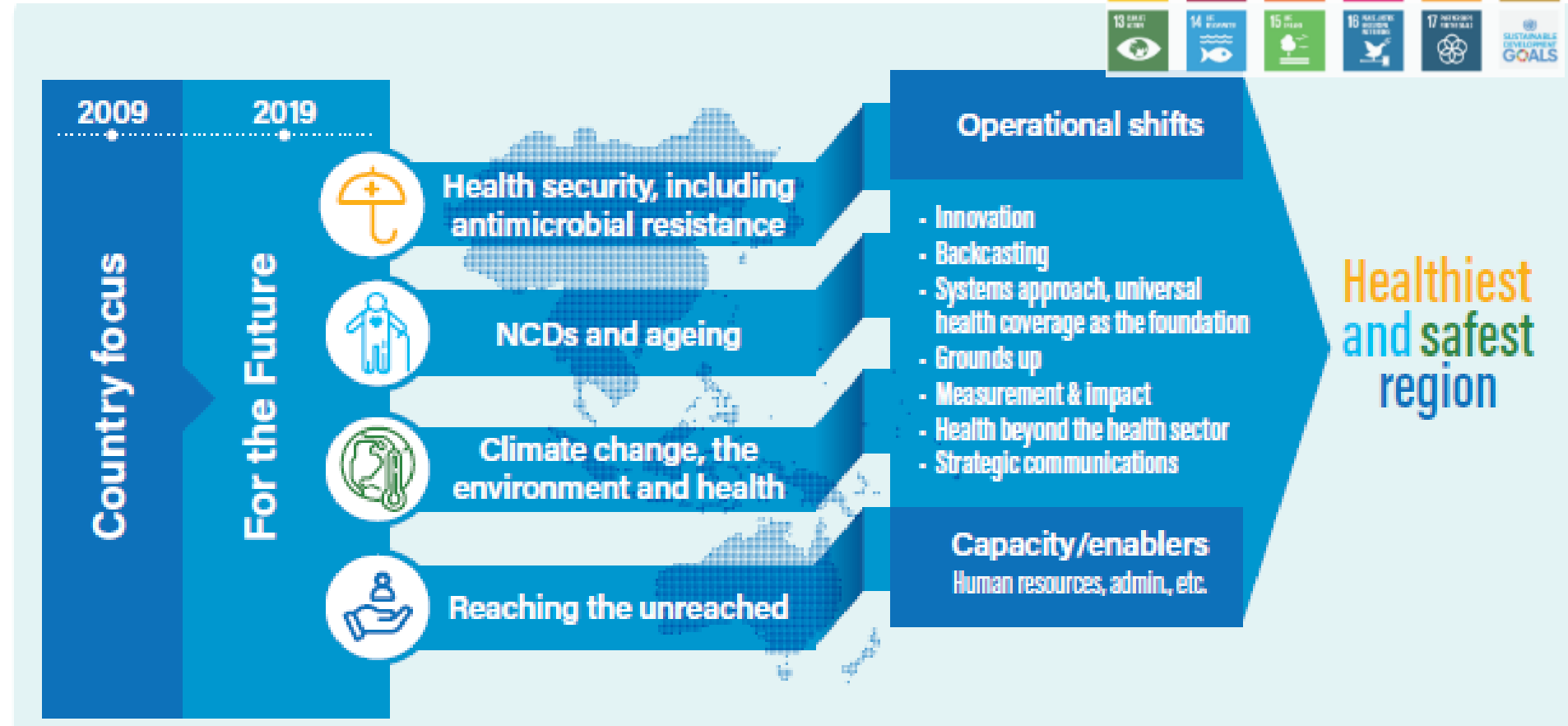
1. WHO西太平洋地域事務局の紹介
2. COVID-19の概況
3. WHOの活動とWHO西太平洋地域各国の対応状況
4. COVID-19とSDGs

The Thematic Priorities “For the Future”

“For the Future Towards the Healthiest and Safest Region” articulates a shared vision for WHO’s work with Member States and partners in the coming years.



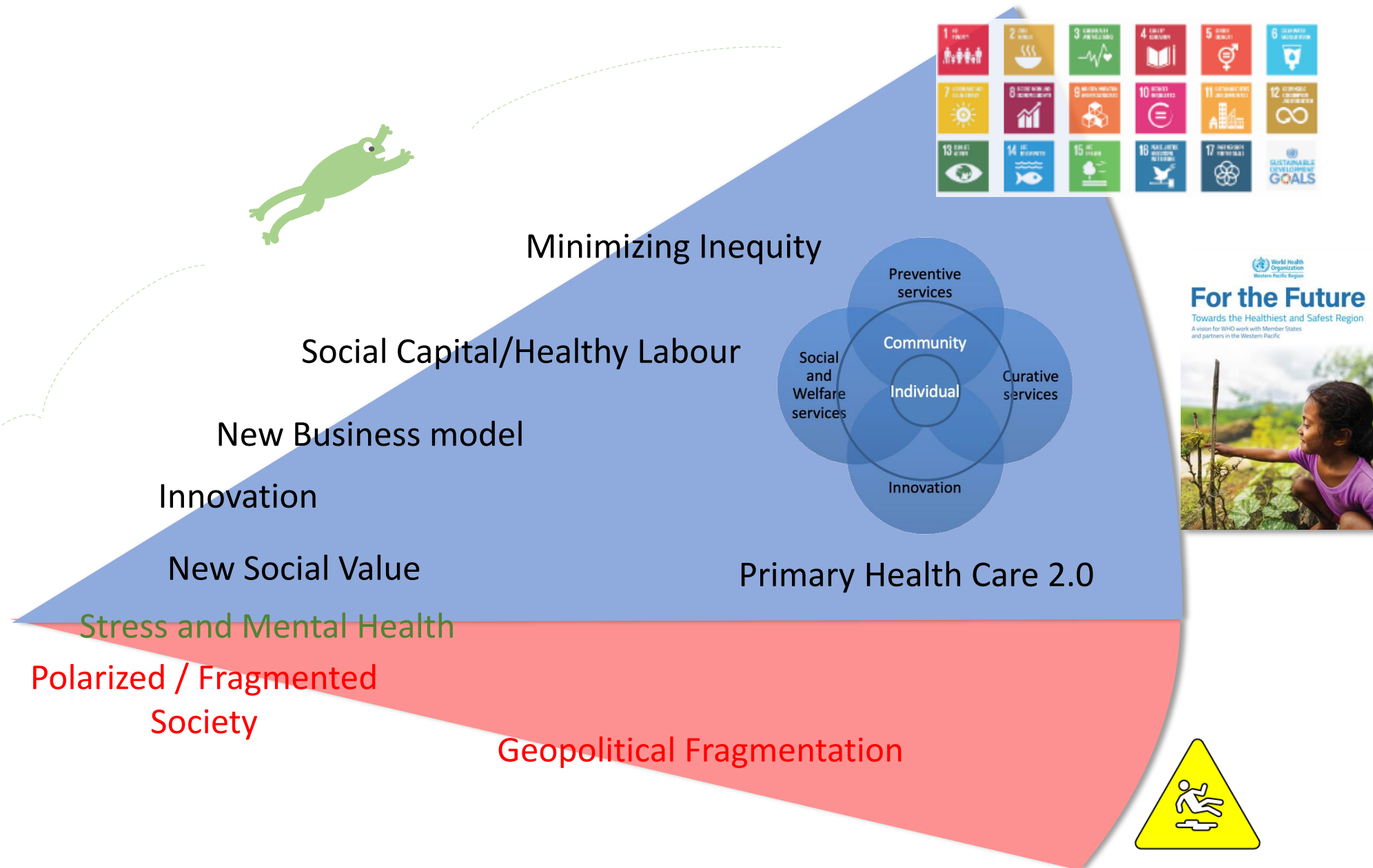
January 2020



WPRO for the future

Why not creating the Future; leapfrog to the future

Health redefines the way we live
COVID-19





Thank you

